

Mass Variations in the System Earth – Forward Simulation and Geoid Impact

Th. Gruber¹, L. Zenner², T. van Dam², M. Thomas³, H. Dobslaw³, P. Visser⁴, B. Vermeersen⁴, M.F.B. Bierkens⁵, L.P.H. van Beek⁵, J. Bamber⁶, R. Gladstone⁶, N. Sneeuw⁷, T. Reubelt⁷

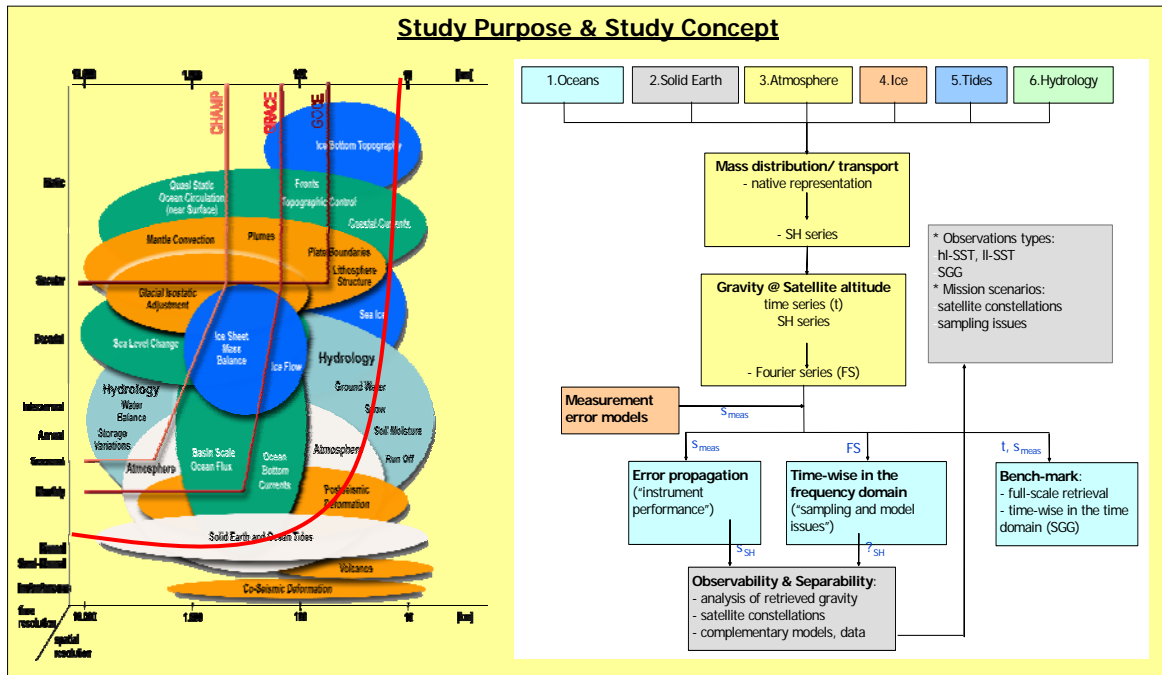
¹Institut für Astronomische und Physikalische Geodäsie, Technische Universität München
²Faculté des Sciences, de la Technologie et de la Communication, University Luxembourg
³Department 1 Geodesy and Remote Sensing, GeoForschungsZentrum Potsdam

⁴Delft Institute of Earth Observation, Delft University of Technology
⁵Utrecht Centre of Geosciences, University Utrecht
⁶Bristol Glaciology Centre, Bristol University
⁷Geodetic Institute, University Stuttgart

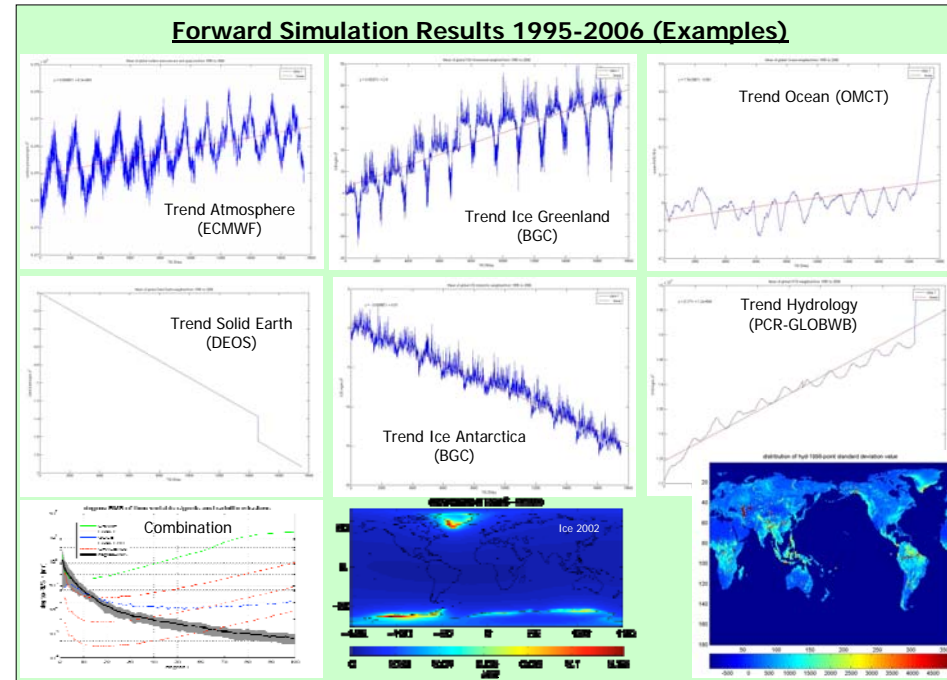
Introduction

A comprehensive forward modelling of relevant mass variation sources has been performed in context of the ESA project “Modelling Individual Sources of Mass Distribution and Transport in the Earth System by Means of Satellites” using up to date models in the various domains. This includes atmospheric, oceanic, hydrological, continental ice as well as solid Earth mass variation models. A coupling between the water cycle models has been taken into account by a twofold approach: (1) All models were driven (where necessary) with atmospheric data taken from the same global atmospheric model. (2) Water flows between hydrology and oceans as well as between continental ice areas and oceans have been taken into account in the ocean model as additional forcing parameters. From the simulation all together 12 years of 6 hourly gravity coefficients have been computed. The poster summarizes the approach applied and shows results from the forward simulation in terms of gravity field and geoid variations.

Study Purpose & Study Concept



Forward Simulation Results 1995-2006 (Examples)



Retrieval – Impact of Satellite Constellations (First Results)

